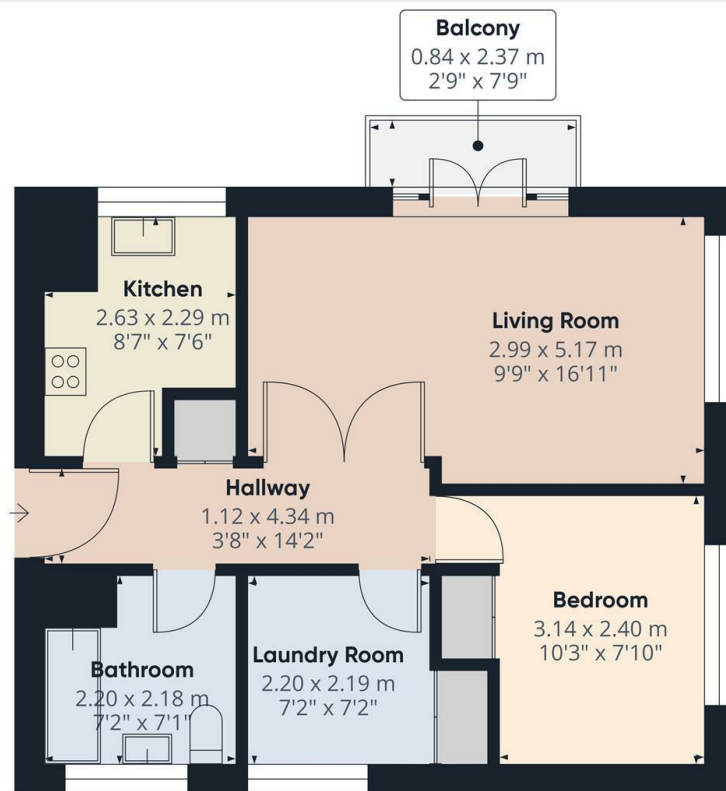


Moss Hall Grove, London, N12 8PG

£1,600 PCM

- 2 Bedroom ground floor apartment
- Fitted wooden blinds
- Available on 12 month tenancy
- Available from 14th January 2026
- Balcony off lounge
- 1 Double bedroom & 1 single bedroom (ideal for study)
- Unfurnished
- Laminate wooden floors throughout
- Fitted kitchen with appliances
- Council tax band C - £1,809.34 per annum



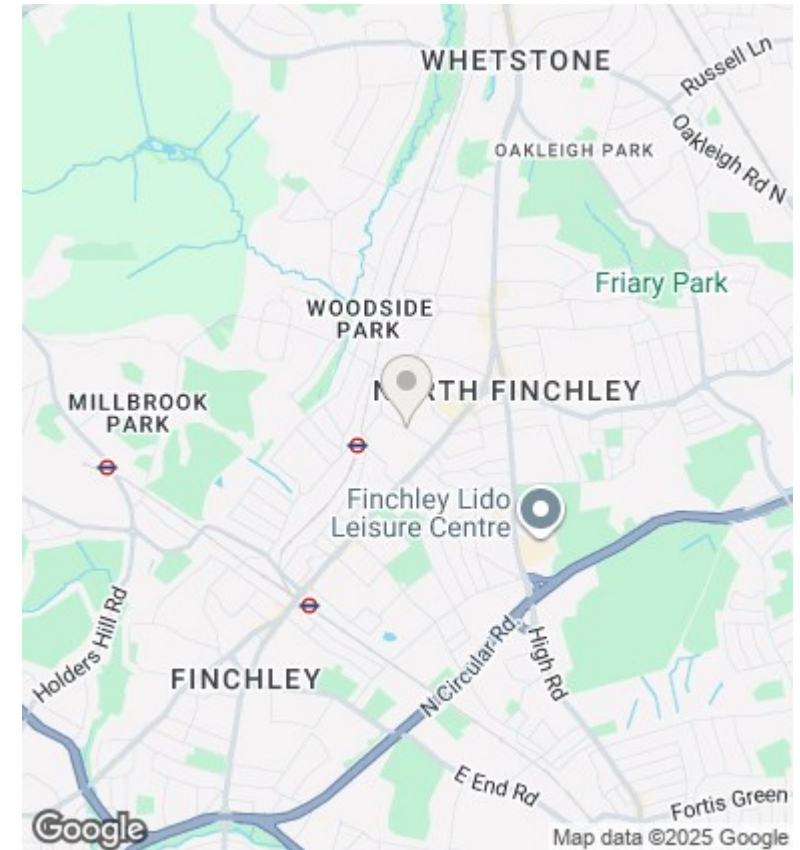
Approximate total area⁽¹⁾
45 m²
483 ft²

Balconies and terraces
2 m²
22 ft²

(1) Excluding balconies and terraces

Calculations reference the RICS IPMS 3C standard. Measurements are approximate and not to scale. This floor plan is intended for illustration only.

GIRAFFE360



Directions

Viewings

Viewings by arrangement only. Call 02083499000 to make an appointment.

Council Tax Band

C

EPC Rating:

D

Energy Efficiency Rating		
	Current	Potential
Very energy efficient - lower running costs		
(92 plus) A		
(81-91) B		
(69-80) C		
(55-68) D	67	76
(39-54) E		
(21-38) F		
(1-20) G		
Not energy efficient - higher running costs		
England & Wales	EU Directive 2002/91/EC	